



MONTHLY MEMBERSHIP PROGRESS REPORT

District 24 C

Results as of: 06/30/2018

GMT: CINDY GREGG

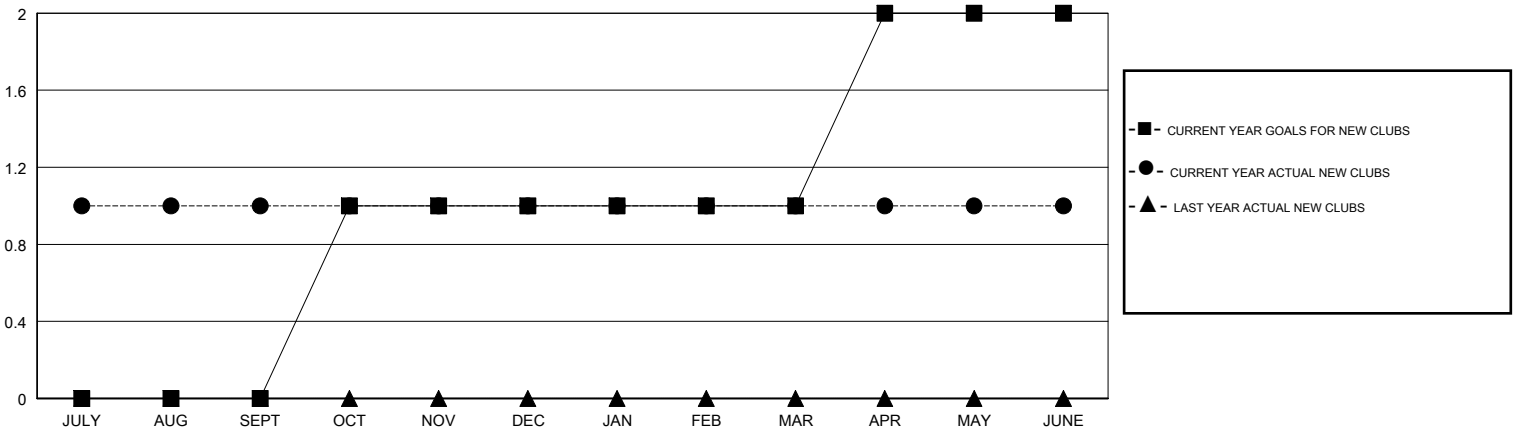
LOCATION VIRGINIA

GMT CA

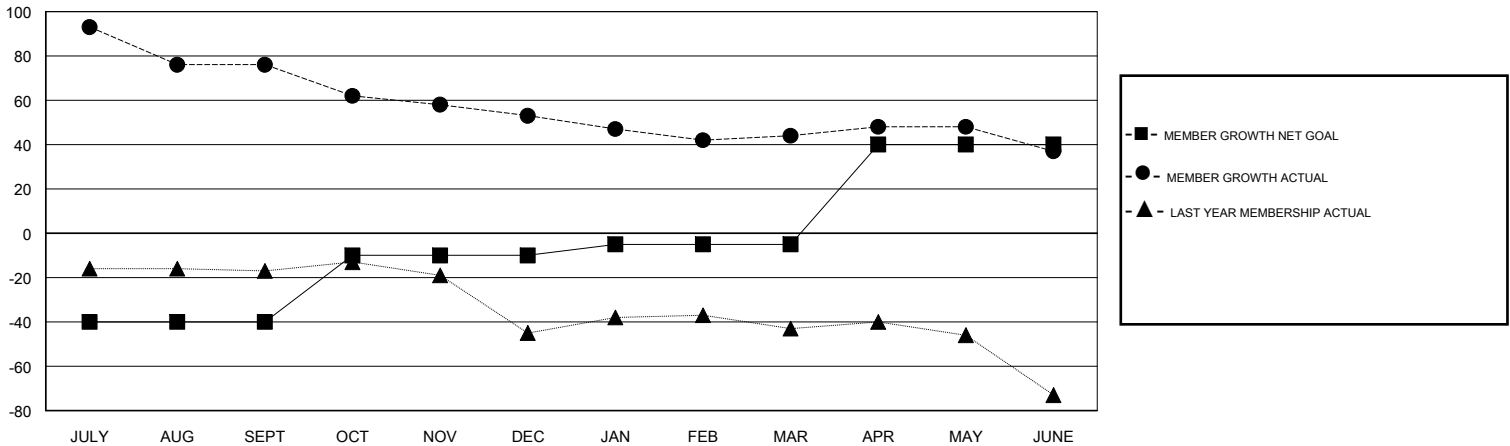
Clubs			
RESULTS FOR 2017-2018			
QUARTER	NEW CLUB GOAL	NEW CLUBS	DROPPED CLUBS
JULY/AUG/SEPT	0	1	1
OCT/NOV/DEC	1	0	1
JAN/FEB/MAR	0	0	0
APR/MAY/JUNE	1	0	0

Members			
RESULTS FOR 2017-2018			
QUARTER	MEMBER GROWTH NET GOAL	MEMBER GROWTH ACTUAL	DROPPED MEMBERS ACTUAL (including transfers)
JULY/AUG/SEPT	-40	155	67
OCT/NOV/DEC	30	12	33
JAN/FEB/MAR	5	19	28
APR/MAY/JUNE	45	34	39

GOALS AND ACTUAL NEW CLUBS CUMULATIVE



GOALS AND ACTUAL MEMBERS CUMULATIVE



DROPPED CLUBS: 2

18 CLUBS OF 47 ADDED 1 OR MORE NEW MEMBERS

GENDER DISTRIBUTION	
MALE	922 (70.17%)
FEMALE	392 (29.83%)
Women Percentage Fiscal Year Goal: 27%	

DROPPED MEMBERS	
DECEASED	18
CLUB CANCELLED	7
OTHER	142
TOTAL	167

[CLICK HERE FOR CUMULATIVE MEMBERSHIP DATA](#)

TOTAL FAMILY UNIT MEMBERS	0
FAMILY MEMBERS PAYING HALF DUES	0